

TOMORROW starts here.



Cisco *live!*

Deploying Service Provider Wi-Fi

BRKSPM-2001

Srini Irigi
Solution Architect



Cisco *live!*

Service Provider Wi-Fi is all About Optimising & Monetising the Network

Agenda

- **WHY** SP Wi-Fi: Drivers/Motivators
 - Overview on SP Wi-Fi
- **WHAT** Defines SP Wi-Fi
 - Requirements, Architectures, Components
- **HOW** SP Wi-Fi is being deployed
 - Use Cases, Call Flows & Case Studies

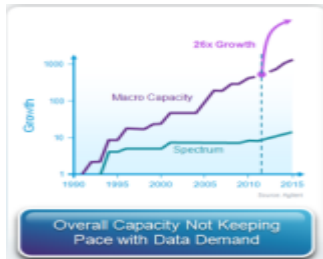


Why are SPs Deploying Wi-Fi ??

Market Dynamics Driving the Need for SP Wi-Fi



Growth in Mobile Data



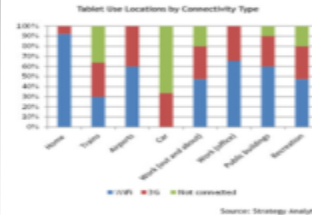
Lack of Spectrum



Attractive Economics



Wi-Fi Ubiquitous in Devices



Big Shift to Indoor Consumption

High interest from Service Providers in adding Wi-Fi access

Wi-Fi Incorporates a Number of Key Benefits for Service Providers' Business

Retention & Loyalty

Increase customer stickiness by offering free mobile Internet through public Wi-Fi



Business Services

Offer managed wireless LAN services to small businesses, retail & enterprises



New revenues

Generate new revenue streams via innovative wireless services



Mobile offload

Optimise mobile data network or offer offload services to mobile operators



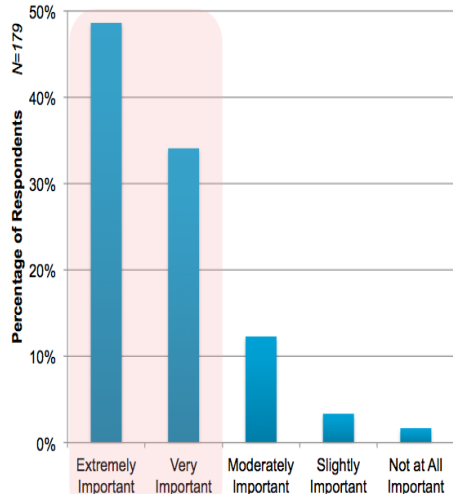
ARPU Increase

Move customers up the value chain by upgrading them to premium packages



Customer Perception of Wi-Fi Offering: Why it is important to Service Providers ?

Importance of Free Wi-Fi in Broadband Provider Choice
(answering 'yes' to a bundled subscription)



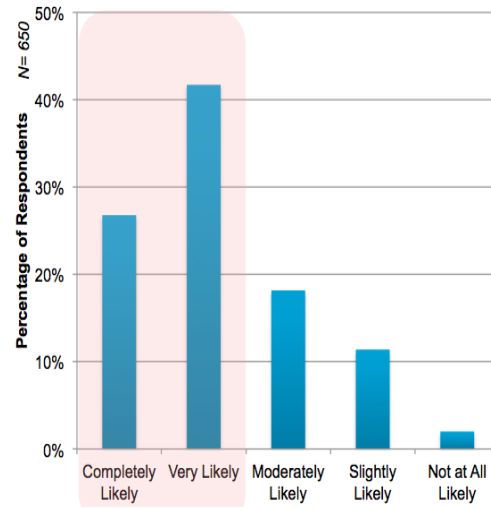
80% of consumers believe free public Wi-Fi is a **very important criteria** when choosing a provider



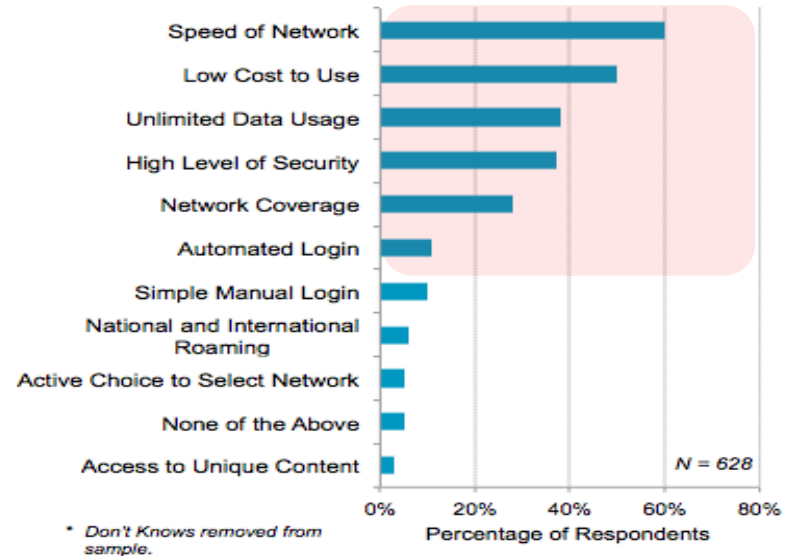
Almost 70% (!) of consumers are likely to change a provider in order to have free public Wi-Fi



Changing Broadband Provider for Free Public Wi-Fi



Most Important Wi-Fi Network Features



Majority of consumers consider User Experience metrics like Speed and Auto-login to be paramount



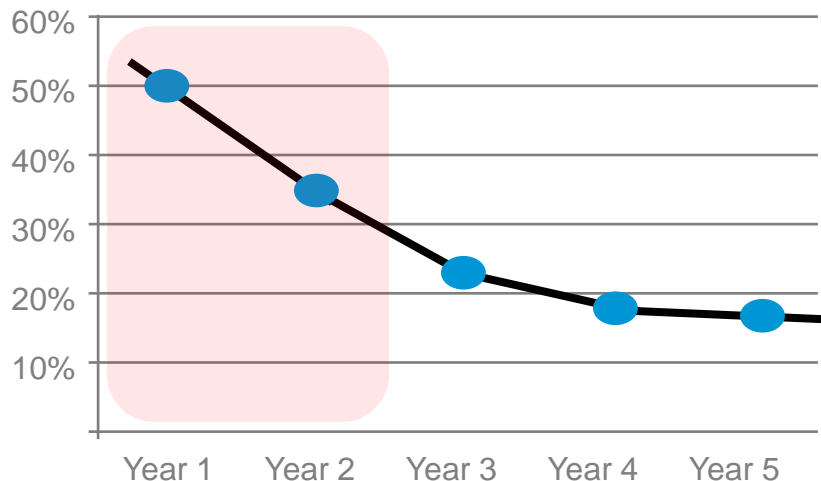
Source:

'Understanding What Customers Want from Wi-Fi' a Cisco IBSG Customer Research (Insights from Latin America Study Results), May 2012

Retention & Loyalty:

Helping Operators Fight Customer Flight Churn

Churn Reduction as a result of free public Wi-Fi



Actual results are as high as 50% (!) churn reduction in the first years



Reduction is estimated to remain significant, yet decrease along the years, considering that more operators will offer public Wi-Fi

Source: Years 1 & 2 based on actual experience of cable operators (Cisco customers) in the US & Canada

ARPU Increase:

Drives Existing Customers Up the Value Chain

1 Associate Wi-Fi rights with premium dual or bundled packages

Who implements it?



2 Offer better experience as customers go up the value chain

A Better speeds while on public Wi-Fi

B More devices registered for automatic login

TV only



Dual-Play



Triple-Play



A



B



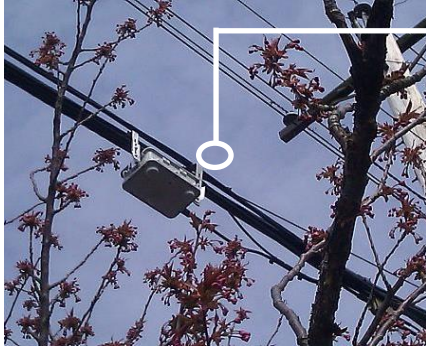
<p>Select your Shaw internet package</p> <p>High Speed Lite</p> <p>Shaw Exo Internet speed: 1</p>	<p>Shaw Exo WiFi Trial download speed*</p> <p>1Mbps</p>	<p>You can register to automatically connect</p> <p>1 mobile devices to the Shaw Exo WiFi Trial</p>
<p>High Speed 20</p> <p>Shaw Exo Internet speed: 20</p>	<p>20Mbps</p>	<p>6 mobile devices to the Shaw Exo WiFi Trial</p>
<p>Broadband 50</p> <p>Shaw Exo Internet speed: 50</p>	<p>Maximum Speed Available</p>	<p>10 mobile devices to the Shaw Exo WiFi Trial</p>

Who implements it?



Mobile Data Offload:

NET Brazil Outdoor Wi-Fi Used for Claro



A Cisco outdoor AP 1552C with *CleanAir* technology installed



NET Serviços, Brazil largest cable operator, offers today the largest deployment of outdoor Wi-Fi with thousands of access points already available



A single access point is offering 3 SSIDs, one per service



CLARO SSID is a closed (secured) network; Claro users connect and authenticate automatically

NET broadband clients are eligible for NET free public Wi-Fi through this SSID



Business Services:

Managed Wi-Fi offerings to Hospitality & Enterprise

Venues and retail owners start using Wi-Fi as a way to improve their business:

- Generates more consumer traffic - attracting more customers
- Increases customer **dwell time** (more time spent = more money)

Example:

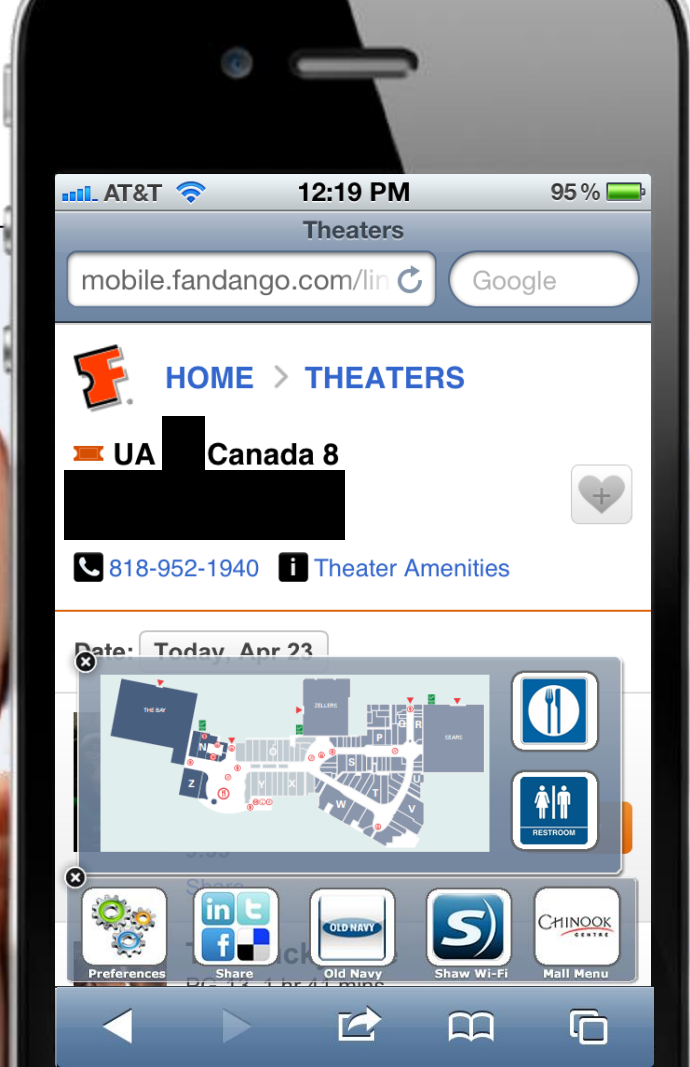
AT&T partnering with largest US restaurant and coffee chains to provide free Wi-Fi



Normally creates an opportunity for the service provider to provide not only guest access to the public, but also **business services** to venue / retail owner

Location-based Services

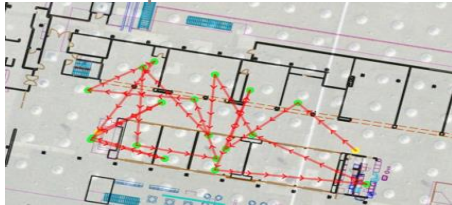
Connected Mobile Experience: Detect, Connect & Engage



Location Data Analytics: Measuring Customer Movement Using Wi-Fi

Analyse how customers move, where they crowd, how they spend time

Common paths:



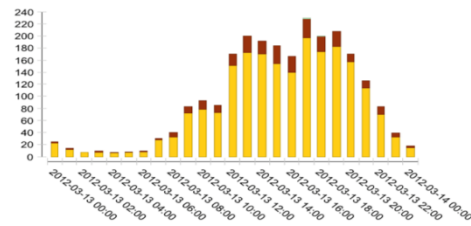
Where people stop first?



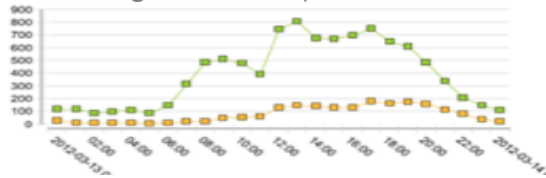
Where customers come from?



Wi-Fi usage
(devices associated)



Opportunity gap analysis (passing vs. entering customers)



Benefits for malls / venues:

- Detailed understanding of customer footprint
- Quantify & justify rental renewal negotiations
- Measure impact of advertisement & signage
- Analyse impact of changes applied to mall
- No applications, hardware or sensors required!

Why Service Provider Wi-Fi?

3 Key Reasons

1. **Optimisation** – increases network capacity and reduce 3G/4G data traffic overload by offloading traffic with SP Wi-Fi
2. **Monetisation** – creates new revenue streams by taking advantage of advanced technology that provides secure delivery of location-based services to mobile devices, new services & increased ARPU
3. **Customer-base Retention & Addition** – expand a physical footprint with a cost-effective Wi-Fi solution to keep customers on the service provider network as they move about and attract new customers

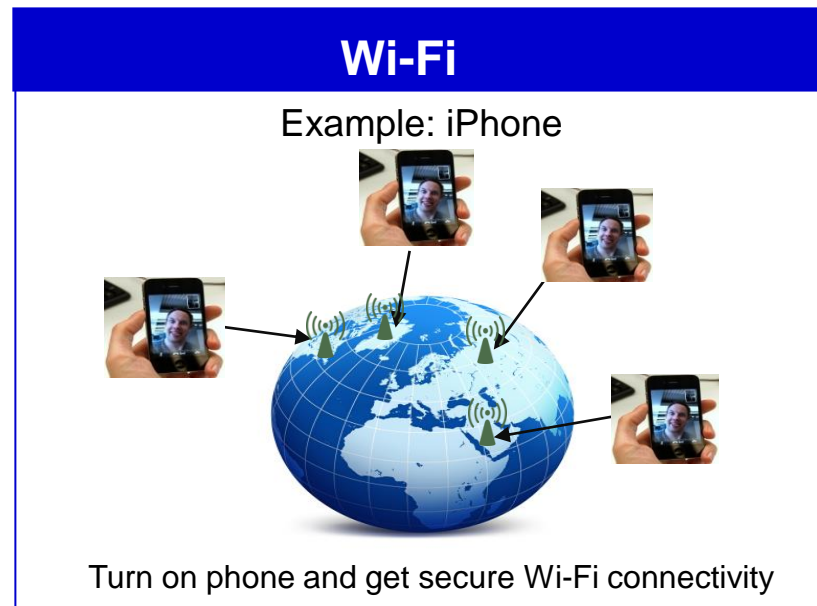
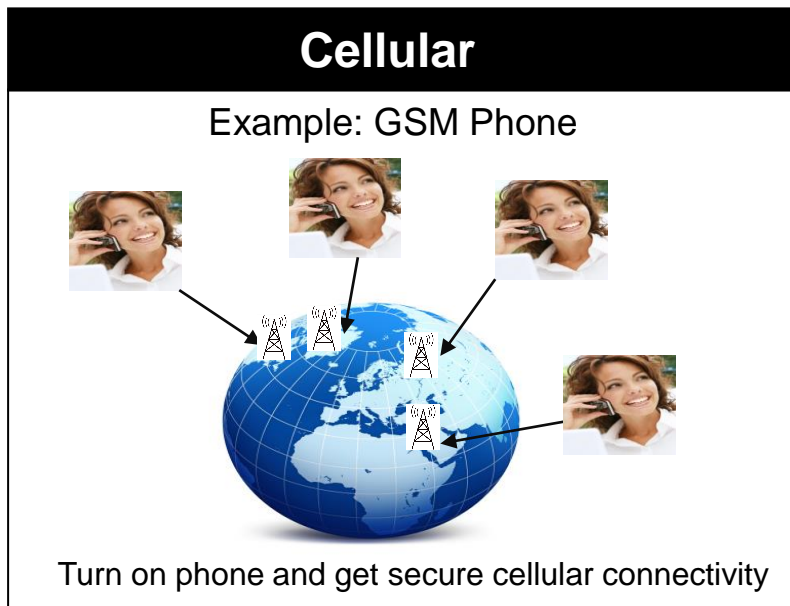




What are the SP Wi-Fi Requirements?

SP Wi-Fi Vision: End User Perspective

Cellular Mobility Experience on Wi-Fi



- Roaming anywhere – no logins or passwords
- Automatic Network Selection
- Access anywhere with my profile & services

SP Wi-Fi: Carrier-class Attributes

Key Requirements

Carrier Grade

Manageability, Network Reliability and Availability
100s of thousands of APs ; Millions (residential);
Millions of Clients

Radio Performance

Radio differentiation, Link Budgets, Beamforming, MIMO
Interference Management, Radio Resource Management

Mobility

Seamless authentication and Fast Roaming/Handoff
Wi-Fi to Wi-Fi (inter and intra-vendor), 3G/4G to Wi-Fi

Roaming

Seamless roaming (with little or no user intervention)
Support home and “visited” network scenarios

Standards Compliant

Critical to support Multi-vendor solution
3GPP compliance important to MNOs

Integration

Common Billing, Policy and Subscriber Management
Leverage MPC/EPC for Wi-Fi network
Parental Control / Lawful Intercept / Local Breakout

SP Wi-Fi: Common Deployments

One Access Technology, Many Deployment Models

Uncontrolled

No SP involvement. User driven offload via unmanaged device.

Home/Soho Dual SSID
(Community)

SP provides dual SSID home device.
Private and public (community) SSID

Hot Spot / Hot Zone

SP installed and managed hot spots in Malls, restaurants, Hotels,...

High Density Wireless

SP installed and managed hot spots in high density user areas (stadiums,..)

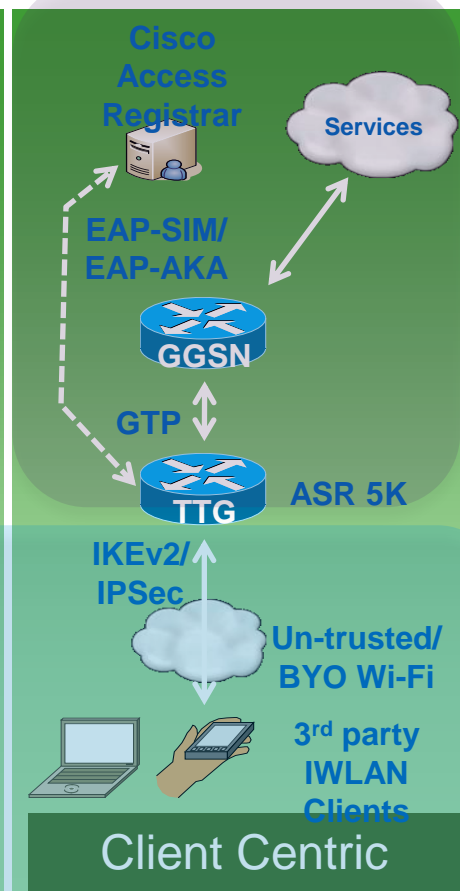
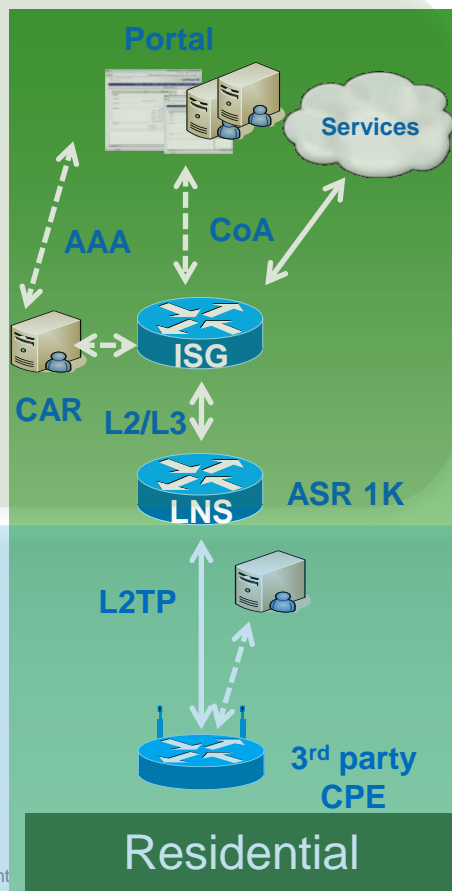
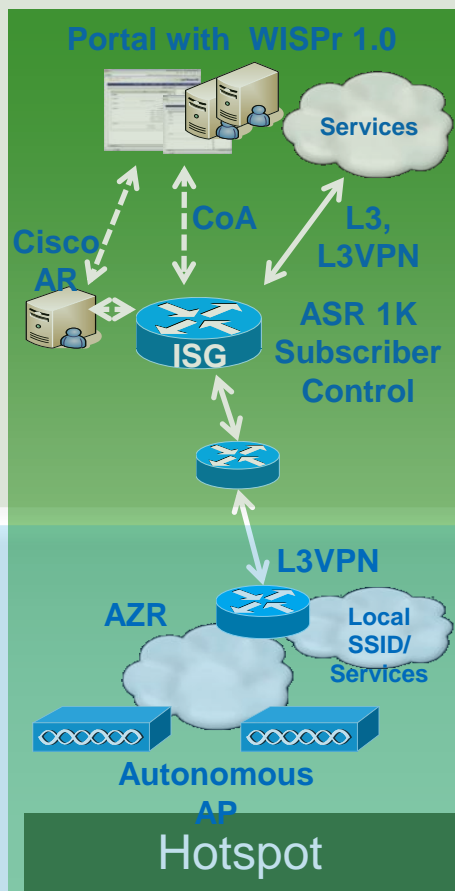
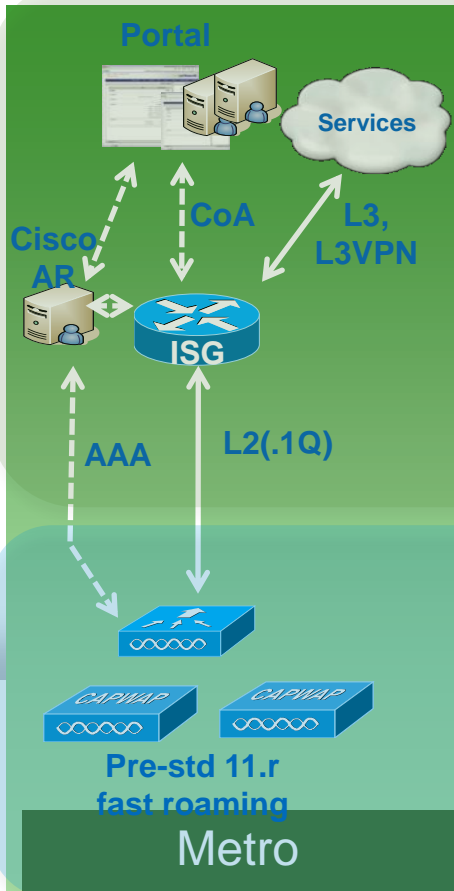
Metro / Mesh

SP install and manages outdoor Wi-Fi for large dense urban areas coverage

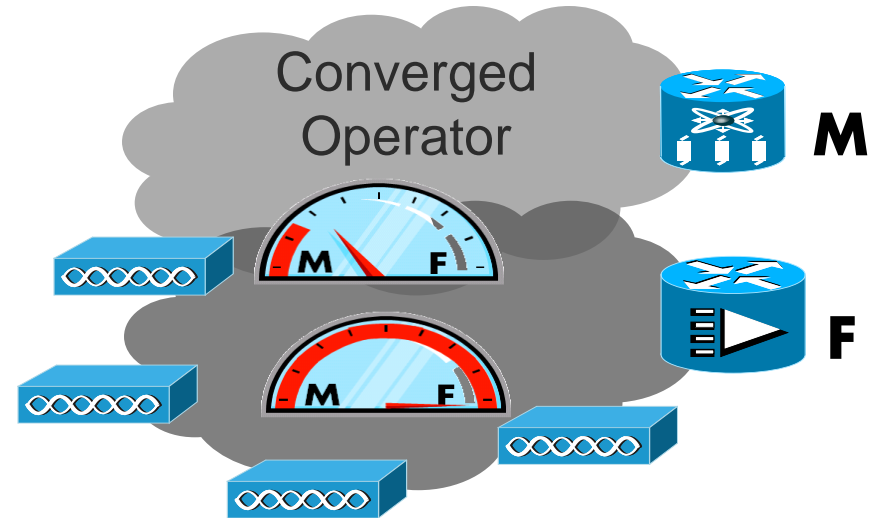
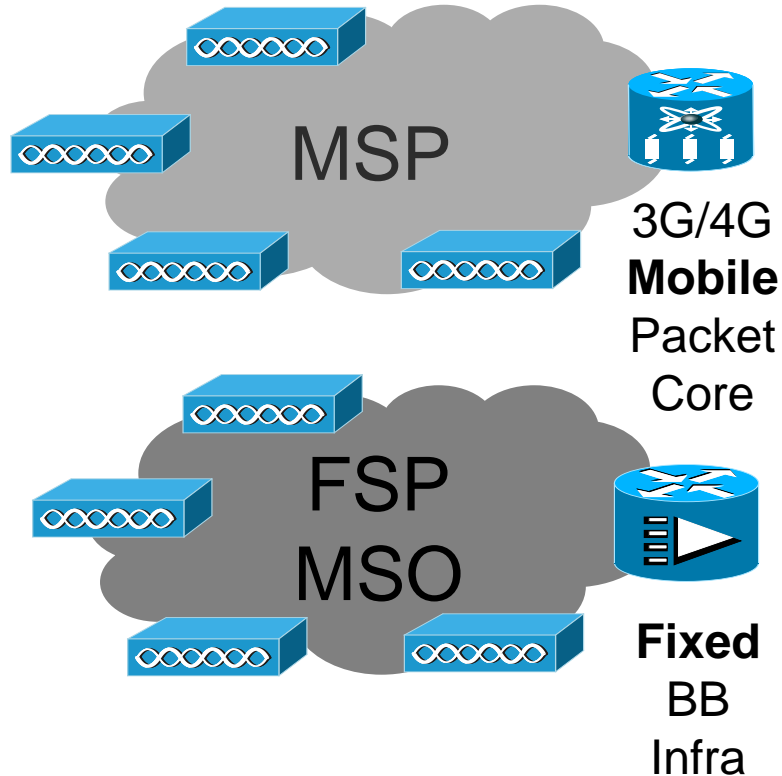
Enterprise Guest Access

Enterprise Guest Access managed by SP

SP Wi-Fi: Evolving From Silo'd Solutions....

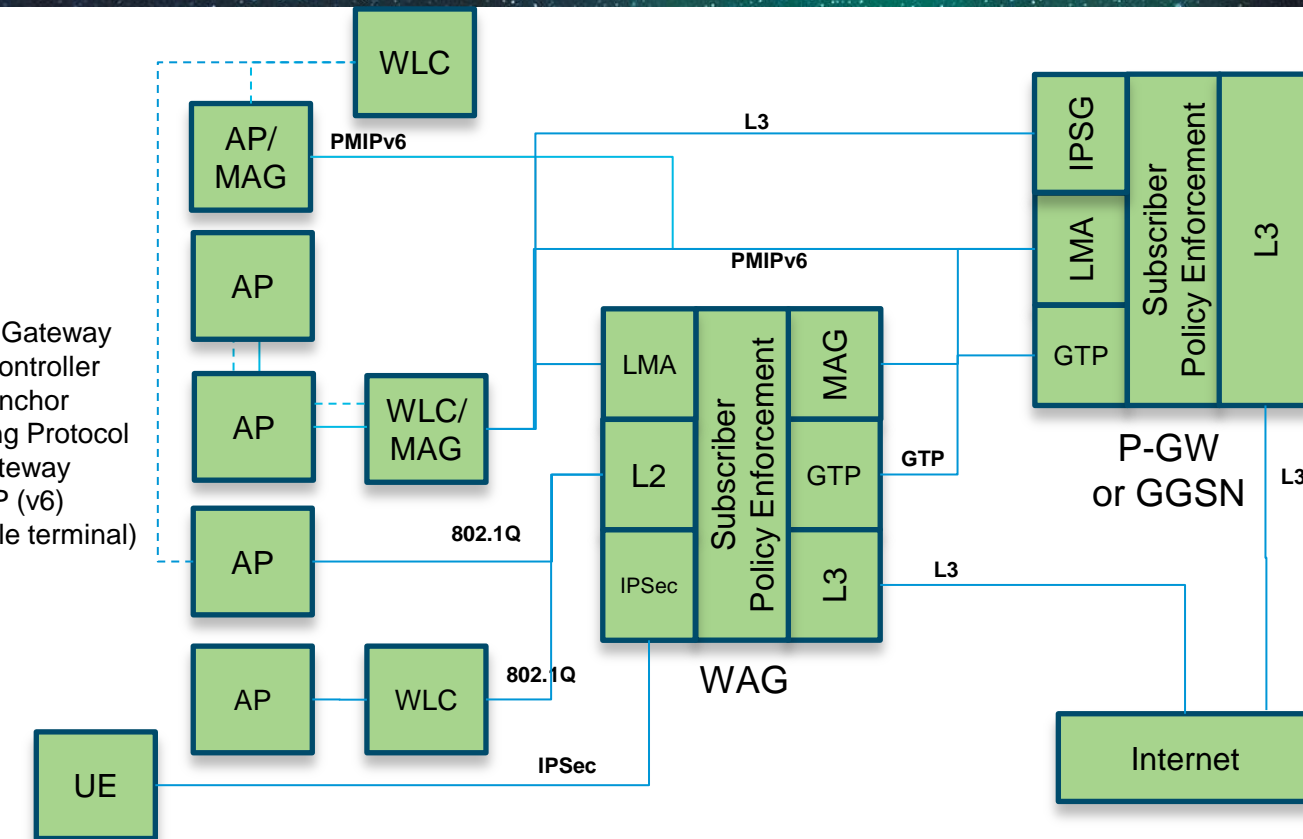


...to a Unified Architecture



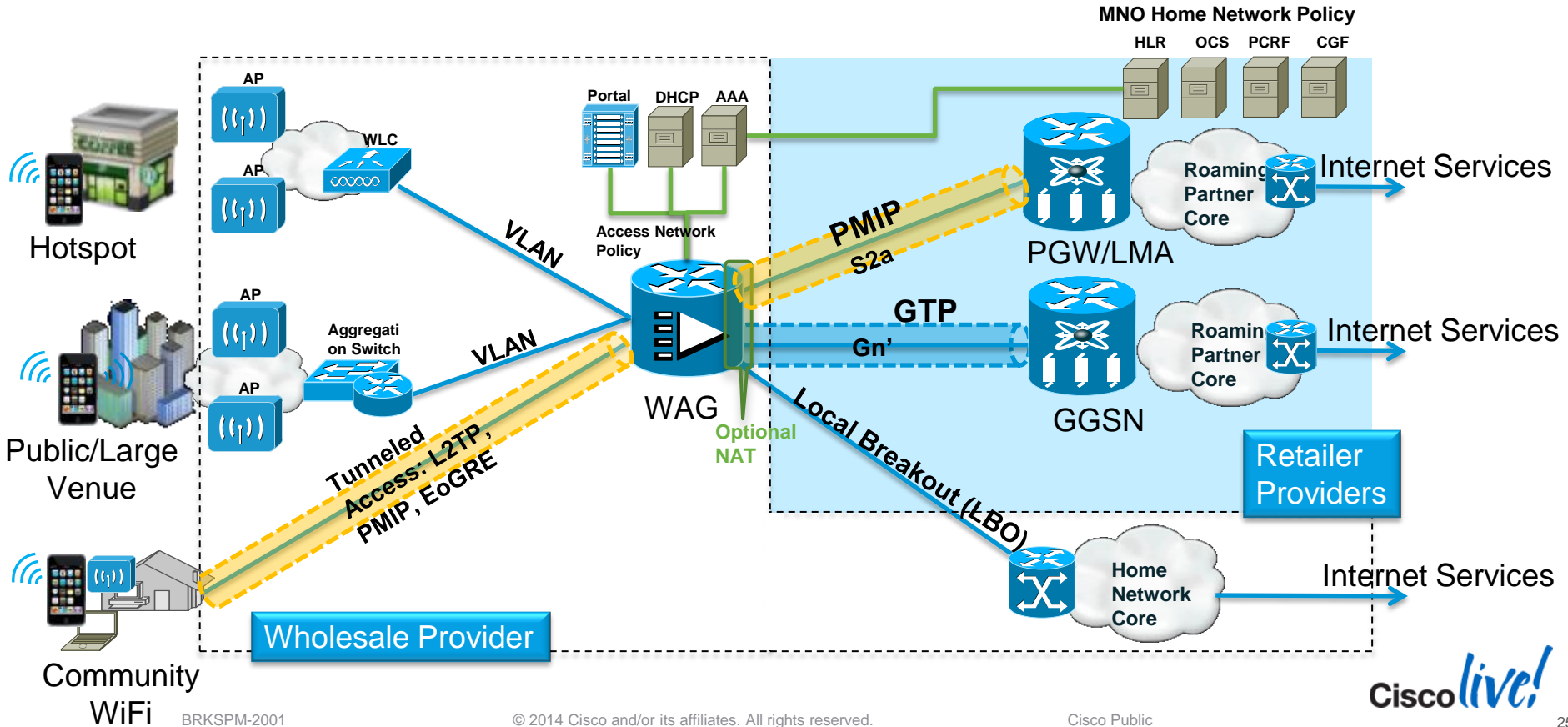
SP Wi-Fi: Unified Architecture

AP= Access Point
 MAG= Mobility Access Gateway
 WLC= Wireless LAN controller
 LMA= Local Mobility Anchor
 GTP= GPRS Tunnelling Protocol
 IPSP= IP Services Gateway
 PMIP= Proxy Mobile IP (v6)
 UE= User Entity (mobile terminal)

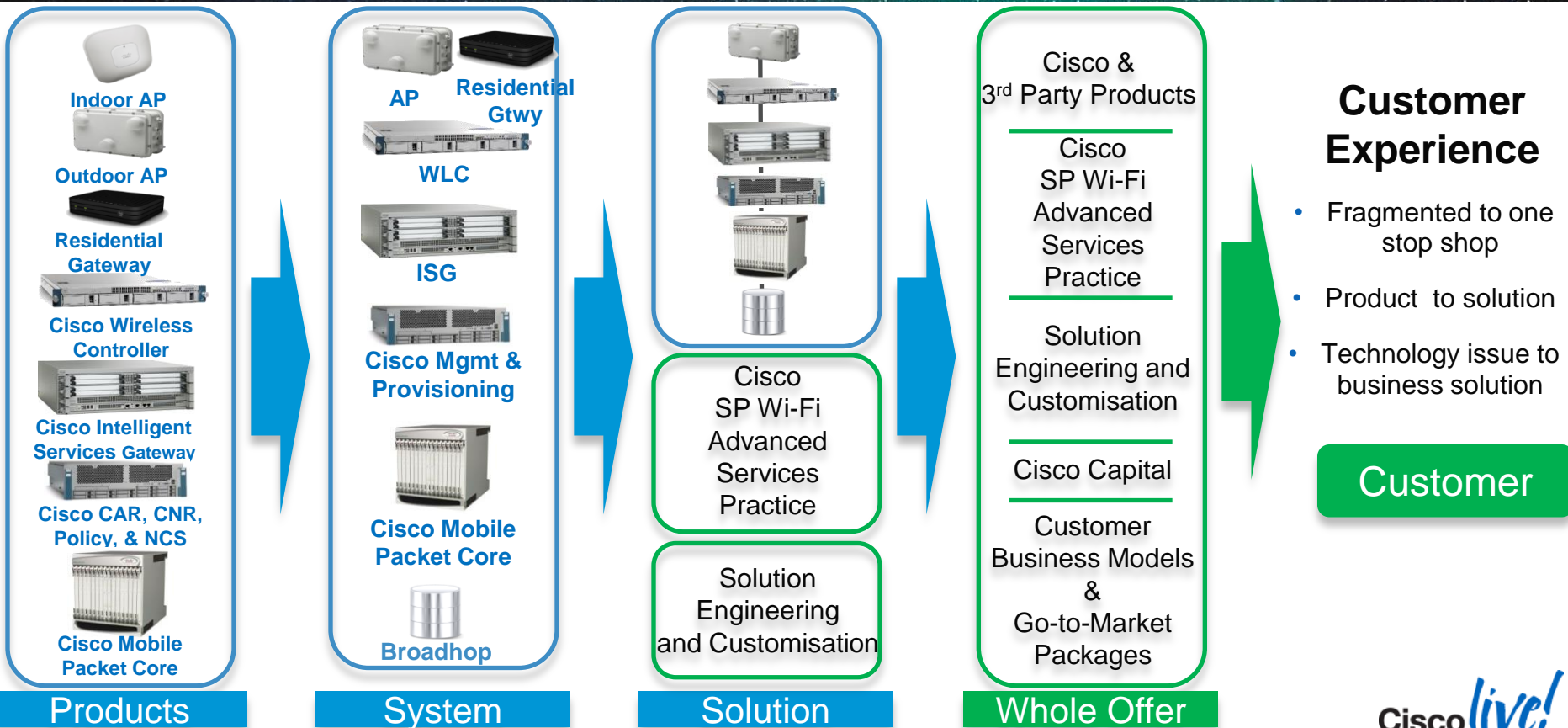


SP Wi-Fi Converged Architecture

Enabling Seamless Convergence

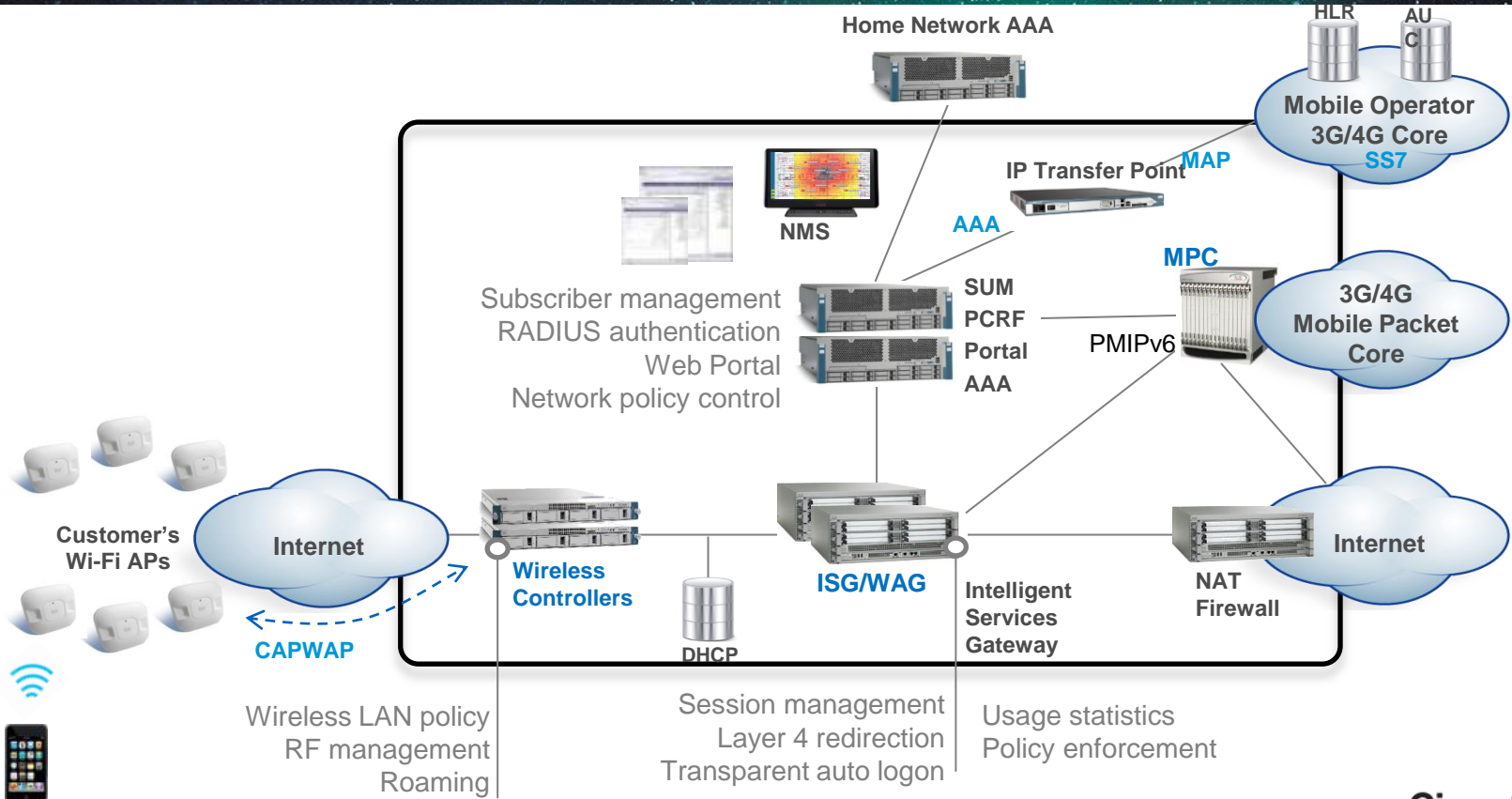


Cisco SP Wi-Fi Whole Offer



Cisco SP Wi-Fi Solution

Access + Service and Policy + Packet Core Integration



Core SP Wi-Fi Functional Components

Authentication Authorisation

AAA / RADIUS
DIAMETER
HLR / HSS
Integration / Roaming
Authentication point
EAP / Web Auth

Address Allocation

Before / After ISG
At LMA
External DHCP
IPv4 / IPv6
Pool depletion
Location based

Session Management

Keep alive
Idle Timeout
Quota enforcement
Policy enforcement
Session differentiation
Session Initiation

Transport Backhaul

CAPWAP
Fragmentation
PMIPv6 (MAG/ LMA)
L2TP (AZR) / GTP
Autonomous AP
MPC integration

Redundancy Load balancing

HSRP/ GLBP
1:1 Redundancy
N:1 Redundancy
ACE based
Single SSID
Multiple SSID

Accounting Billing & Policy

Start and Stop
Records (CDR)
Who sends them
Integration with
Existing billing
Gx / Gy / Gz
Policy definitions

Web Portals

When to redirect
L4 / HTTP 302
Who redirects
Redirection Portals
Web Authentication
Self service Portals
Whitelisting
Location based

Mobility

Wi-Fi only mobility
Hierarchical mobility
Wi-Fi / Macro
Max mobility coverage
Roaming agreements
Mobility events
Anchors / tracking

Network Management

Security
Zero touch rollout
Legal Intercept
Parental Control
Analytics / planning
Asset tracking
Rogue AP's

Subscriber Management

Provisioning
Pre-paid / Quotas
Wi-Fi only users
Transparent logon
Service profiles
Self service portals

Authentication Options

Two main authentication models

- EAP/802.1x – WLC Authentication / ISG - Authorisation
 - Secure SSID
 - AAA is the authentication server
 - Seamless authorisation but requires client configuration (certificates, username/pwd, etc)
 - EAP-SIM/AKA helps if proper supplicant available on terminal device
- Weblogin – Portal-based Authentication and Authorisation
 - Open SSID
 - Requires no client configuration, completely Web-based
 - Subsequent Logons are transparent using device MAC address
 - Vulnerable to MAC Spoofing

Address Allocation & Management

Assignment Considerations

- When to assign?
 - Before authentication for Web-auth users
 - Post authentication for EAP / 802.1x
- Where in the network?
 - In the access network or in the core
- Where is the DHCP server ?
 - Local
 - External
 - Relay/Proxy functions
- What to assign?
 - Location based address assignment with option 82
- Subnet size?
 - Lease time
 - Broadcast domain size

Subscriber Session Initiation & Termination

Deployment considerations

- Session creation (First Sign of Life - FSOL)
 - DHCP initiated (L2 connected)
 - Unclassified MAC (L2 Connected)
 - Unclassified IP (L3 routed)
 - RADIUS proxy/accounting start (L3 Routed)
- Session termination options
 - Idle timeouts? Keep alives? How are you billing ?
 - DHCP lease expiry
 - Authentication timeout

Session Management

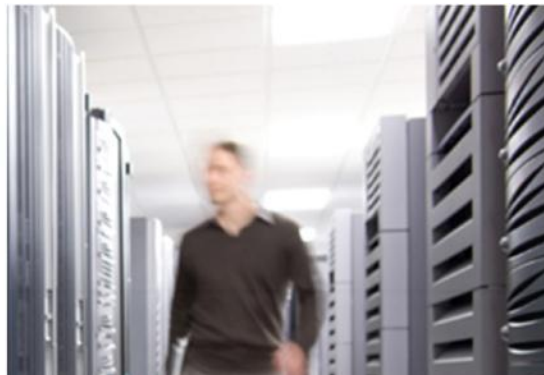
Service considerations

- Service Differentiation
 - Gold / Silver / Bronze / policy enforcement
 - Parental control / DPI
- Quota enforcement
 - Usage based / Time based
- Location based services
- Free services
 - Open garden
 - Whitelisting
- Dynamic service updates
 - Policy push
- Service Control and Policy
 - DPI
- Targeted Push Advertising
 - Intelligent, Location-aware
- Branding

Mobility Management

Essentials for Mobility

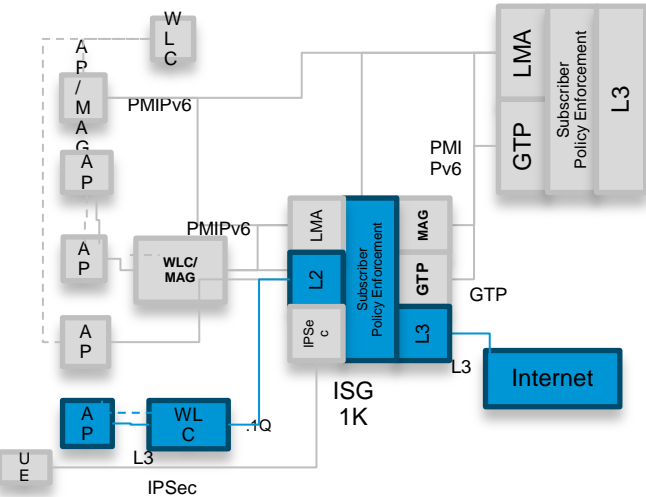
- Common anchor point for all access technologies
- A common subscriber identifier across all access technologies
 - Eg. MAC address, MSISDN.... key for inter-access mobility
- Address allocated from a common DHCP pool
- A common authentication scheme
- Common session identifier
 - For common billing and subscriber service across WiFi/3G/4G
- Ability to track subscriber
- Next Generation Hotspot (Roaming)



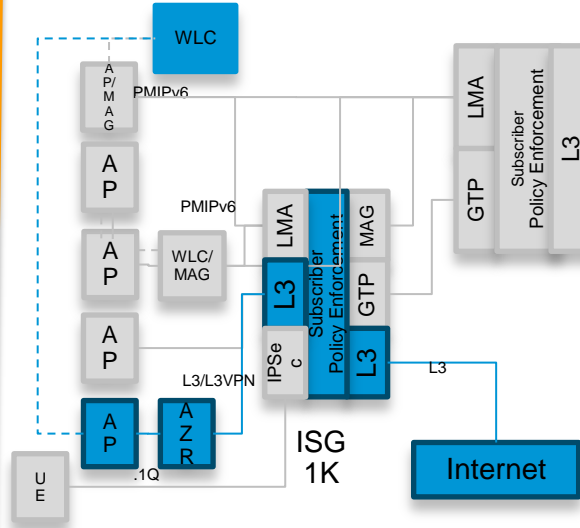
SP Wi-Fi Common Deployment Models

SP Wi-Fi: Deployment Architectures & Use Cases

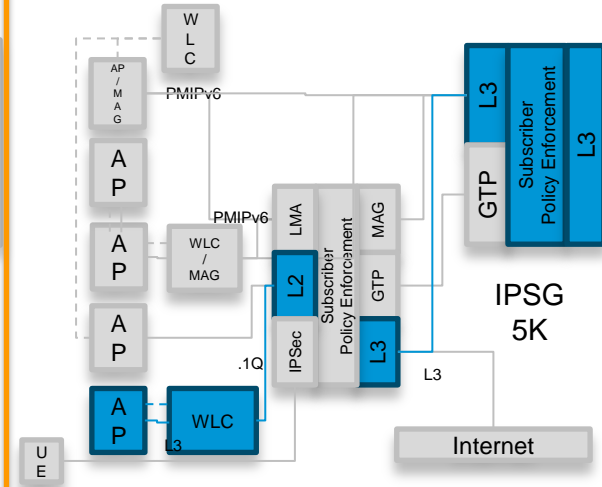
Layer2 connected



Layer3 Routed



Packet Core Integration



Metro-WiFi
Deployment

Hotspot
Deployment

MPC Integration

SP Wi-Fi Deployment Use Cases

Market Segments	Use Case Scenarios	
Metro-WiFi Deployment (Layer 2 connected)	<ul style="list-style-type: none">• Open Authentication• Web Authentication (Web-Login)• Web Authentication (One-Click)• WISPr• Voucher-based Authentication• Pre-paid (Time/Quota)• EAP-PEAP• EAP-SIM• Hotspot 2.0• Open Transparent Auto Logon (TAL) (MAC-based)• TAL (MAC-based with DHCP Lease Query)	
HotSpot Deployment (Layer3 Routed)		
Packet Core Integration Deployment		

Metro Wi-Fi Offload Deployment

Connectivity

- L2-connected network
- Unclassified MAC/DHCP initiator

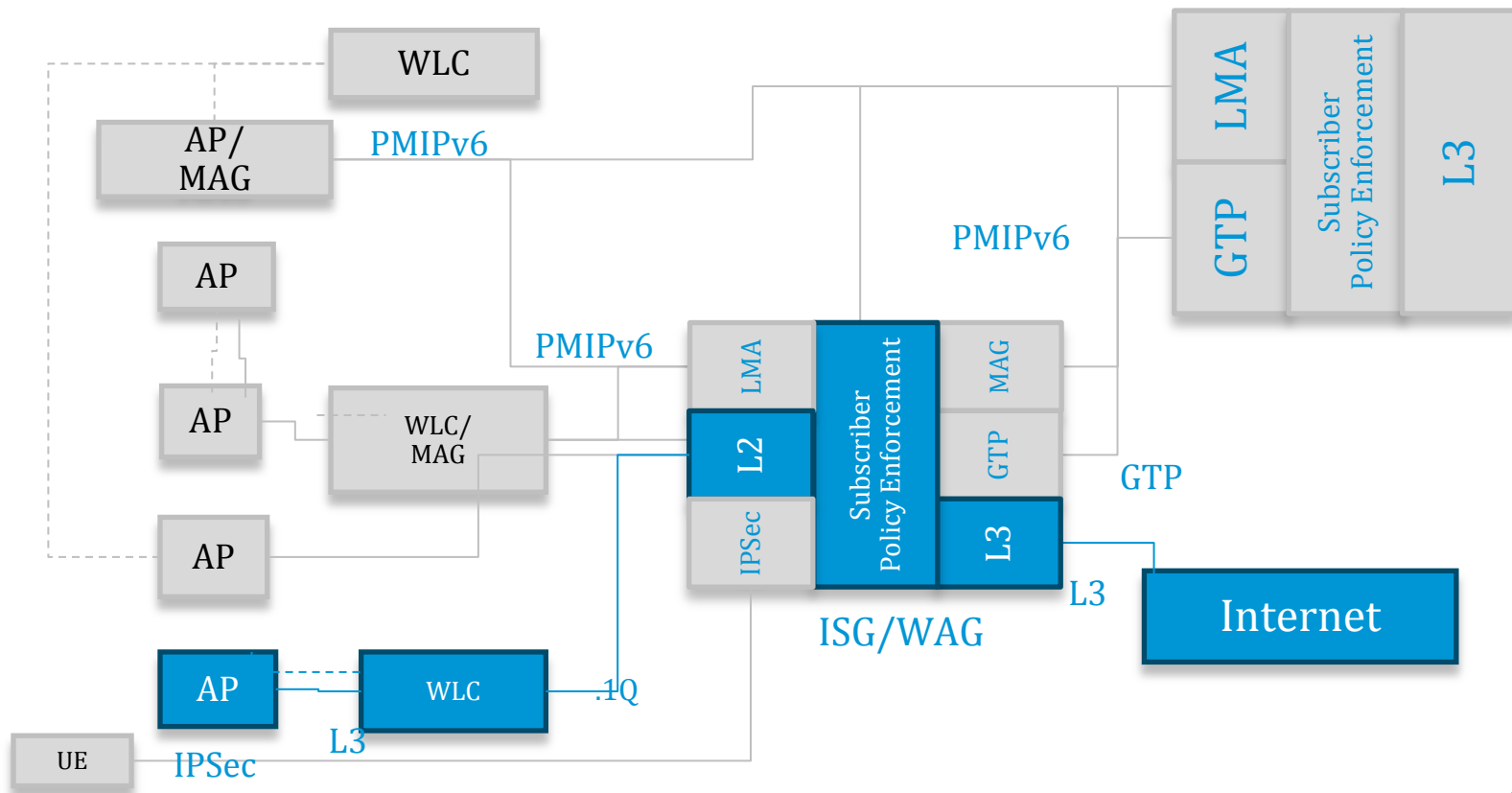
IP Addressing

- IPv4 Clients
- External/Internal DHCP

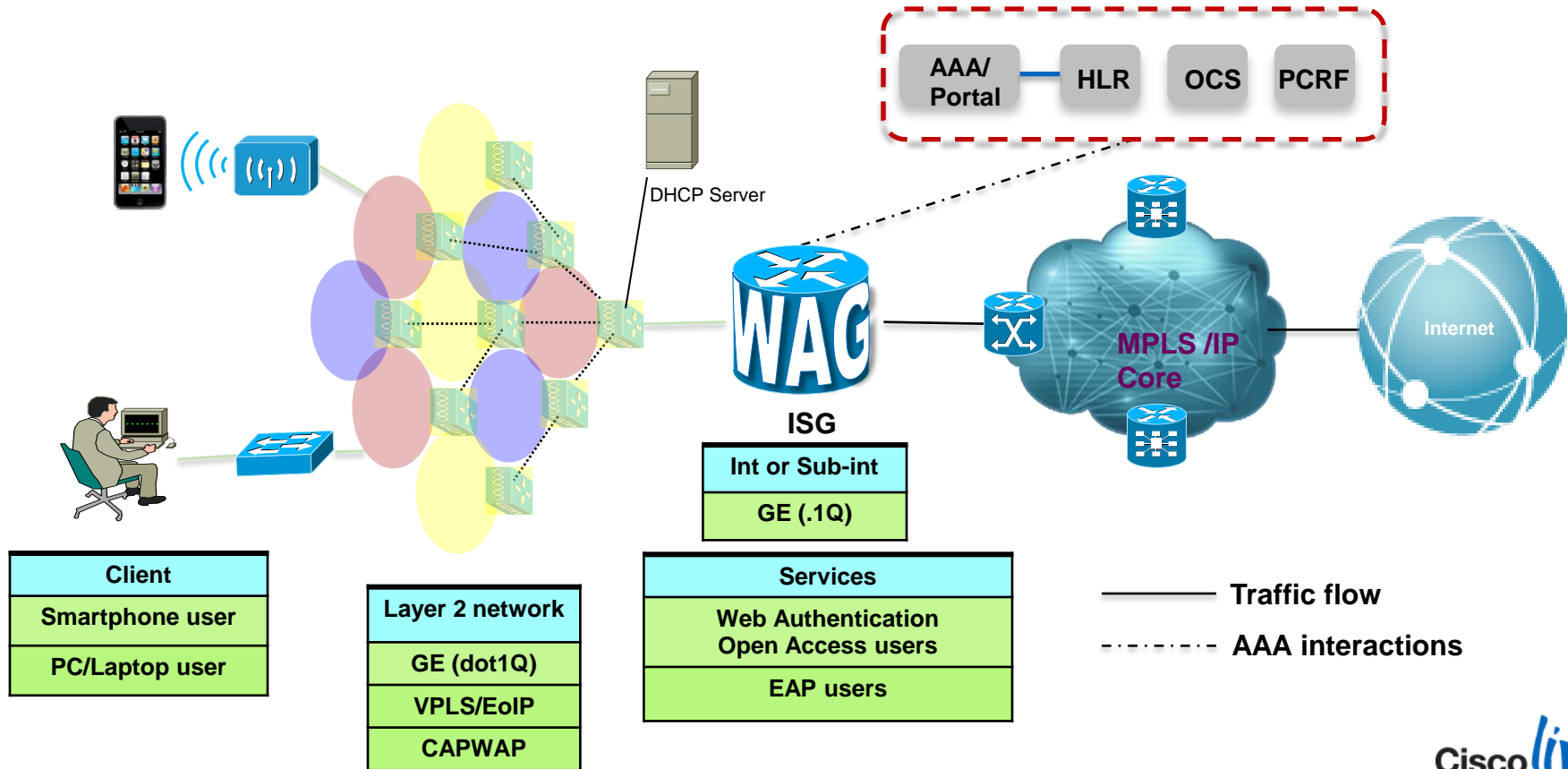
Services

- Stadium, Metro Station Public Hotspots
- Open Access Wi-Fi Services
- Web Authentication
- EAP-SIM Authentication
- Dynamic Service Selection

Metro Wi-Fi Offload Deployment



Metro Wi-Fi Offload Deployment



Hotspot Deployment

Connectivity

- L3-connected network
- Unclassified IP OR RADIUS Proxy initiator

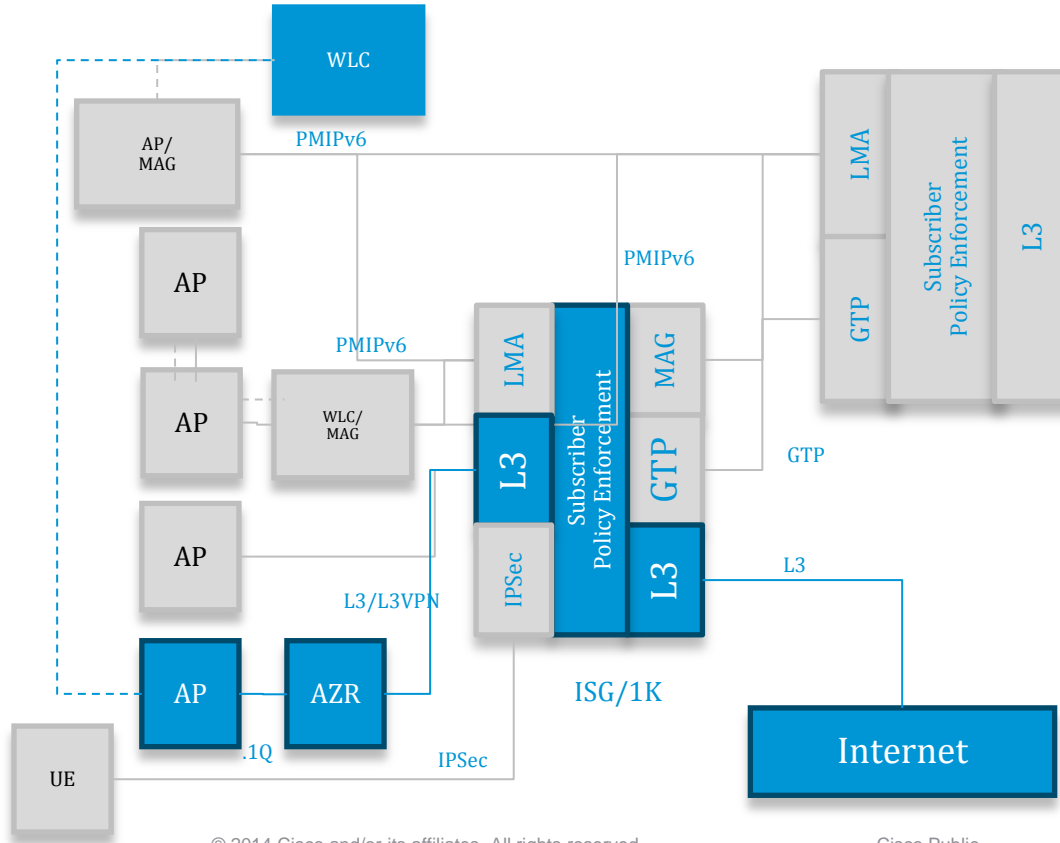
IP Addressing

- IPv4 Clients
- External DHCP

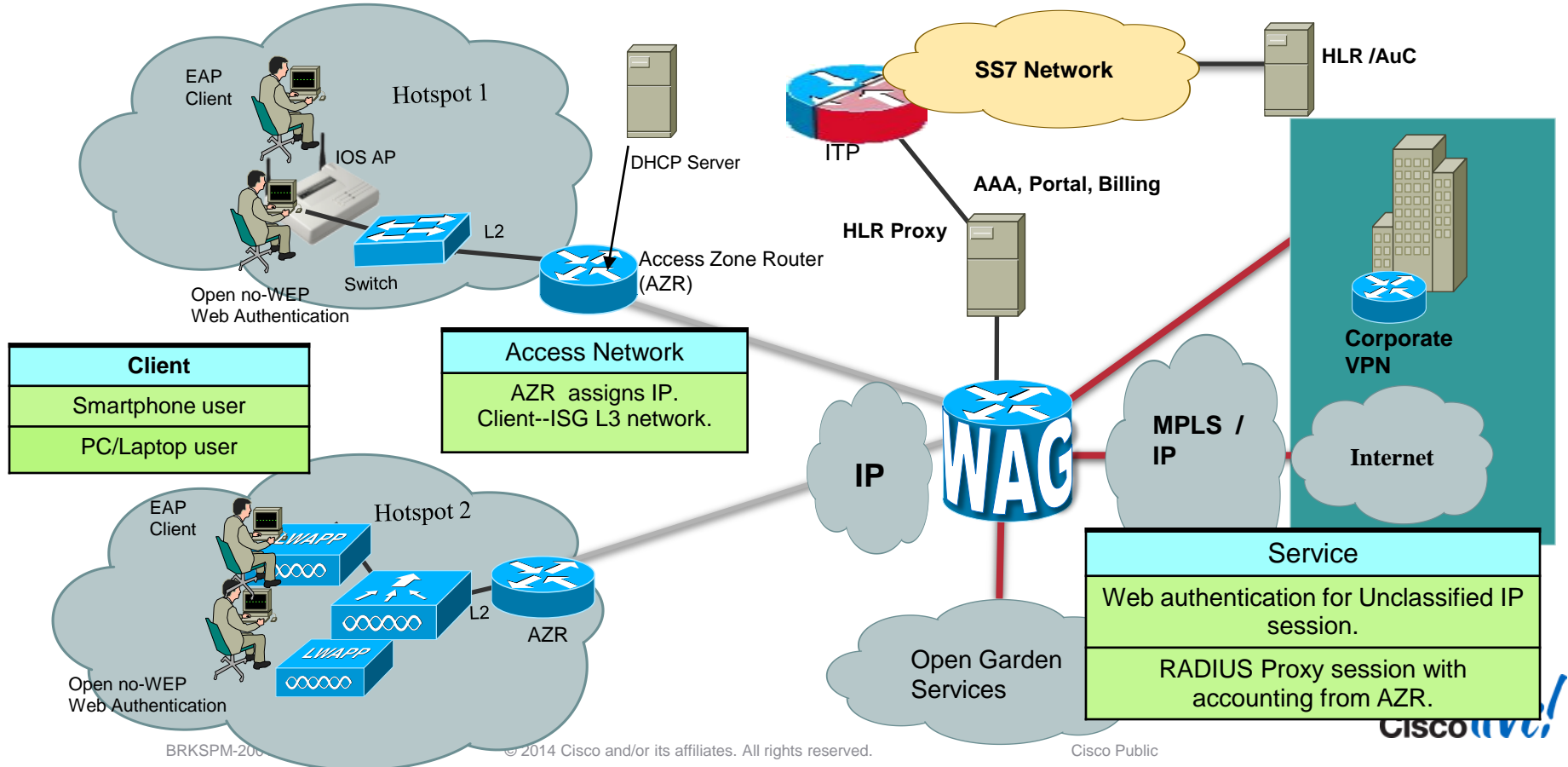
Services

- Mobile Data Offload
- Open Access Wi-Fi Services
- Web Authentication
- EAP-SIM Authentication
- Dynamic Service Selection

Hotspot Deployment



Hotspot Deployment

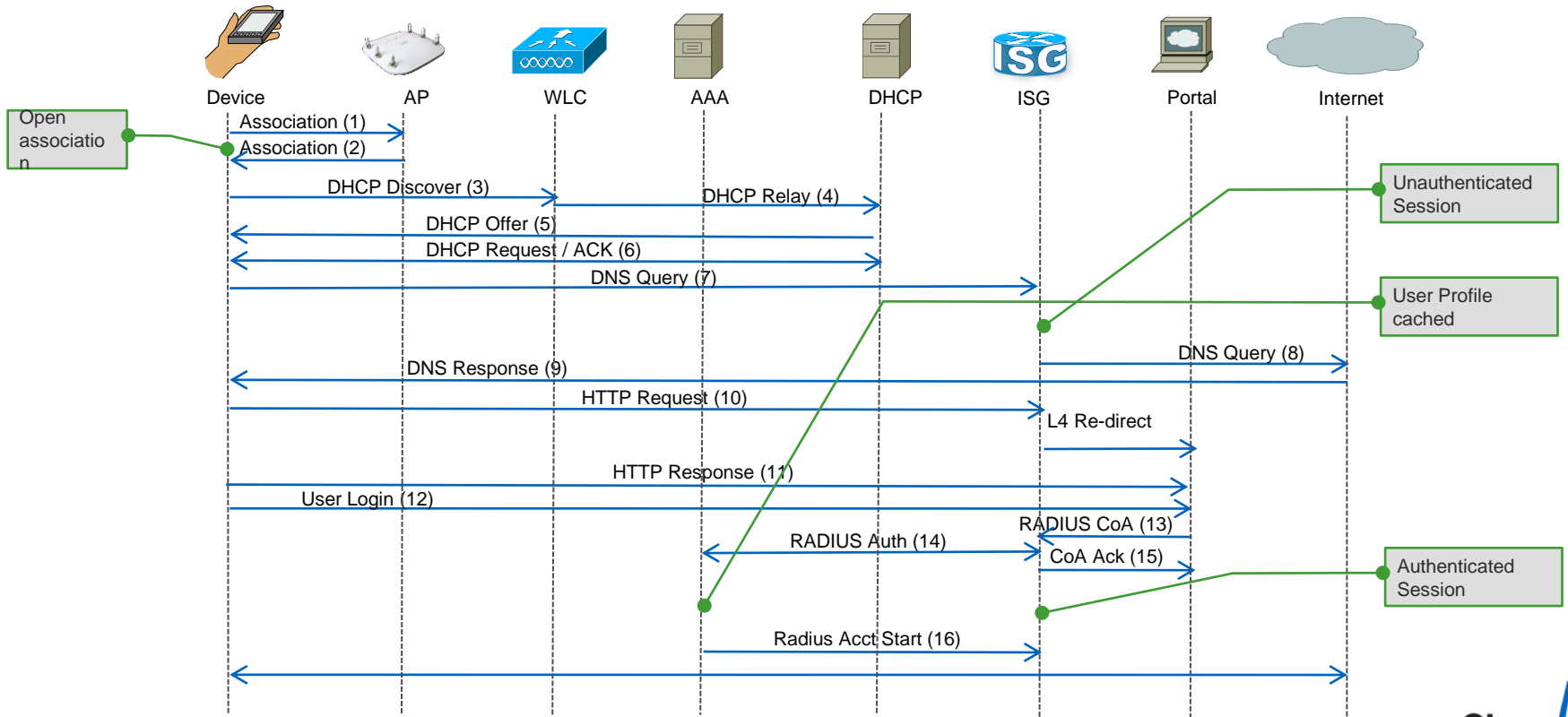


Web Authorisation for SP Wi-Fi Access

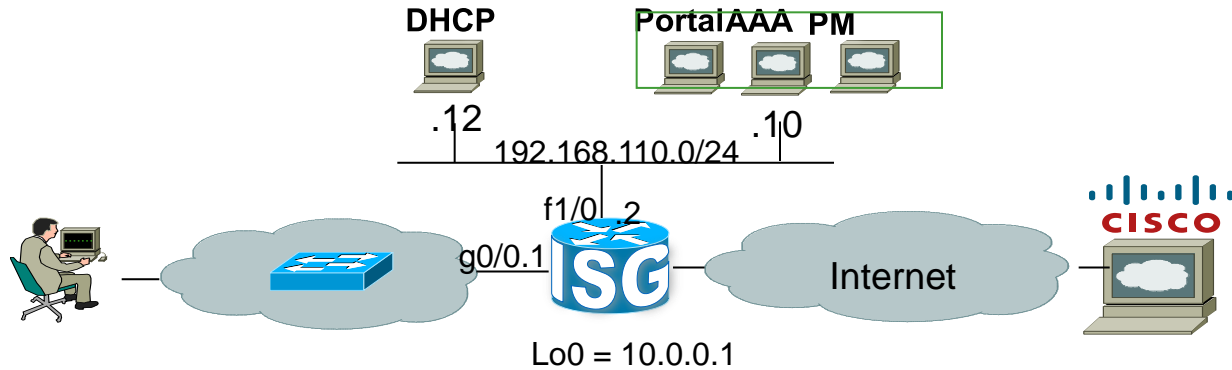
Why is it needed?

- Web portal based access continues to be demanded by MNOs and Wi-Fi Access providers
- Many mobile devices do not have SIM cards or SIM-based clients apps
 - Wi-Fi iPad and iPod touch are two major examples
 - Will every Wi-Fi connected device get a SIM? When?
- BYOD will be a major use case for Wi-Fi access going forward
- Exploit visiting “non-subscribers” – a good “churn” opportunity for you
 - Need a portal login and splash page to offer your service

WEB Authentication Call Flow



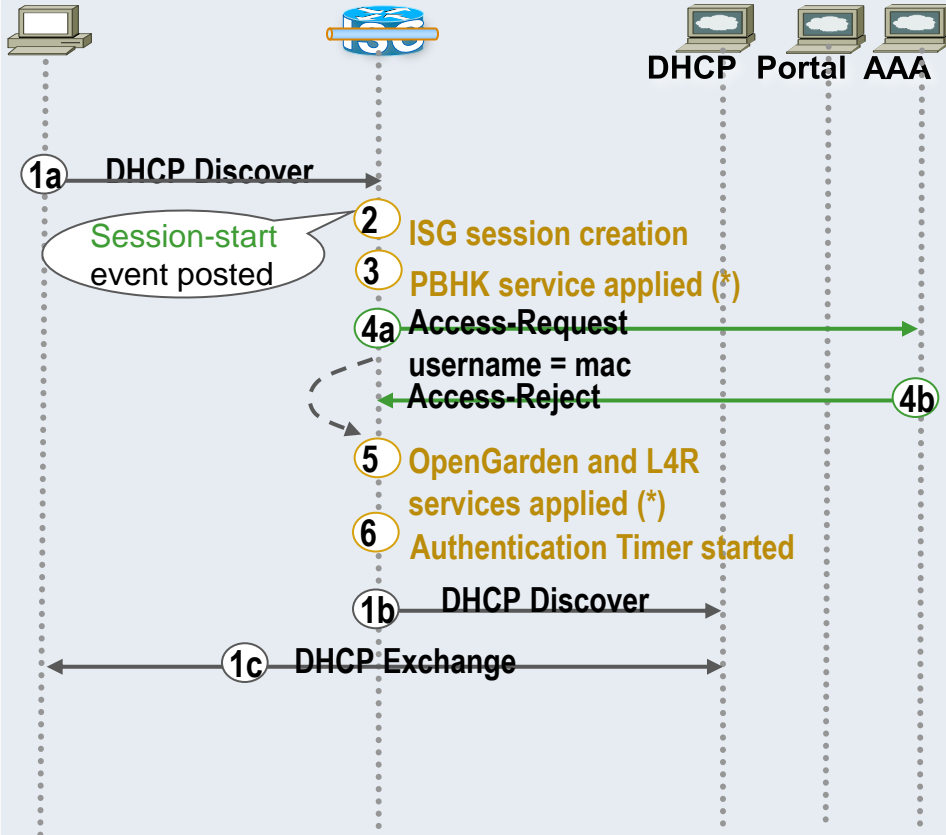
ISG with DHCP Session Trigger



Address Assignm.	Session Initiator	Interface	Authentication
DHCP ISG is DHCP Relay	DHCP	GE (.1Q)	TAL (mac address) w/ Web Logon fall back for Self Subscription

- Client/Subscriber on a smartphone/tablet/laptop associates to a available WLAN SSID on a AP and initiates DHCP DISCOVER
- Once authenticated subscriber will be assigned a Pay Per Use Standard High Speed service

DHCP Session Initiator: Call Flows



```
interface GigabitEthernet 0/0.1
```

```
encapsulation dot1Q 10
```

```
ip address ...
```

```
service-policy type control IP_SESSION_RULE1
```

```
ip subscriber I2-connected
```

initiator DHCP

```
policy-map type control IP_SESSION_RULE1
```

```
<snip>
class type control always event session-start
```

```
10 service-policy type service name PBHK_SRV
```

```
20 authorize aaa list IP_AUTHOR_LIST
```

```
5 password cisco123 identifier mac-addr
```

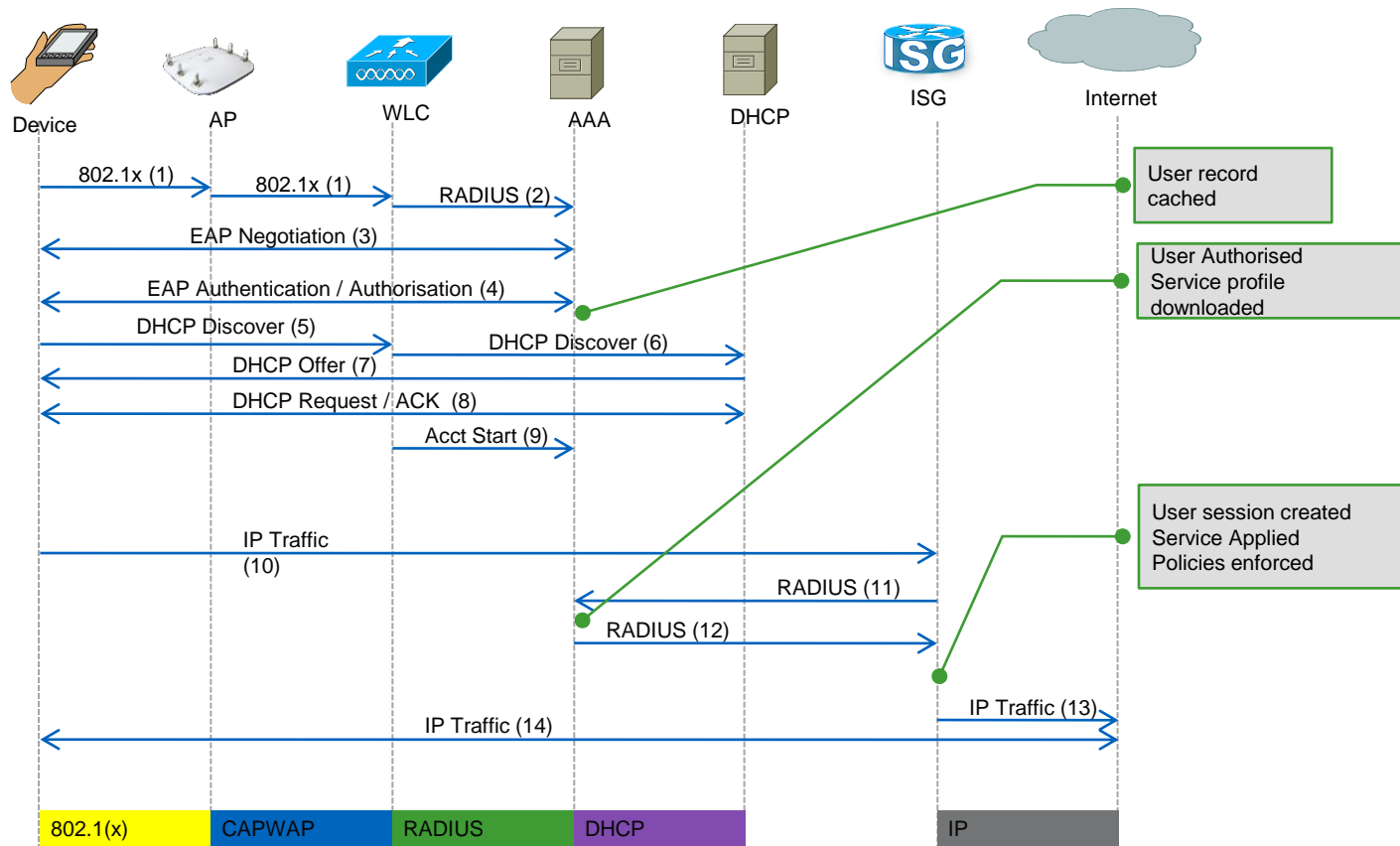
```
6 30 service-policy type service name OG_SRV
```

```
40 service-policy type service name L4R_SRV
```

```
50 set-timer AUTHEN_TMR 10
```

(*) assumes that the definition of PBHK, L4R and OpenGarden are already available on the ISG

EAP Authentication Call Flow



PMIPv6 Based Deployment for Packet Core Integration

Connectivity

- L2-connected network
- DHCP initiated
- Offload: Unclassified MAC & RADIUS Proxy initiator

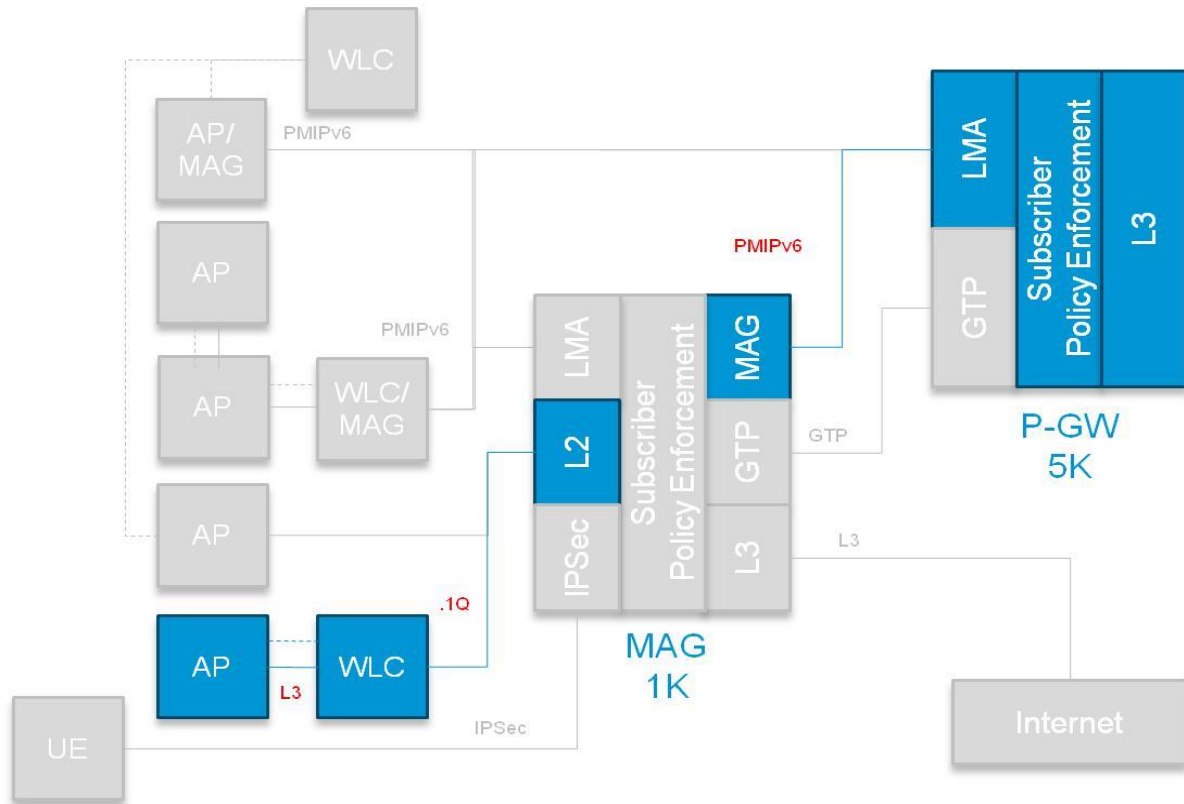
IP Addressing

- IPv4, IPv6 or Dual-stack Clients
- Simple IP User Internal DHCP
- Mobile IP User from LMA

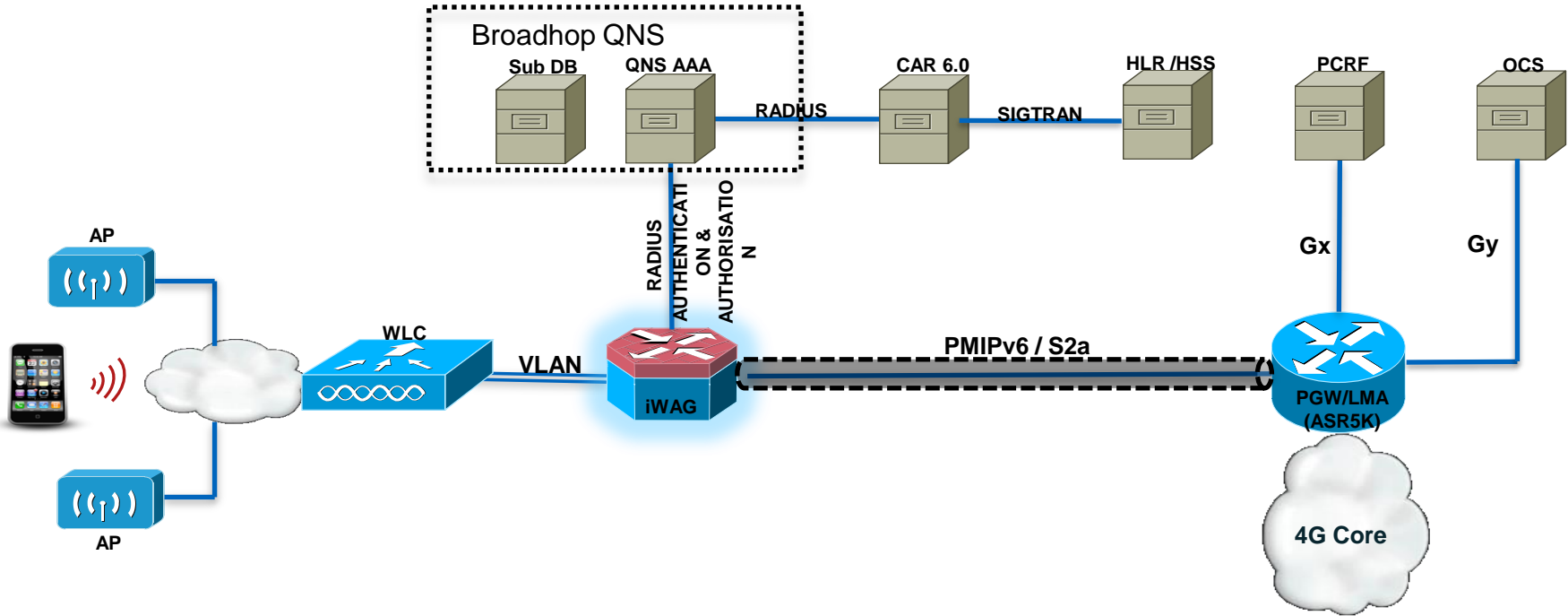
Services

- Open Access Wi-Fi Services (Simple offload)
- Web Authentication, EAP-SIM/AKA
- Dynamic Service Selection

PMIPv6 Based Deployment for Packet Core Integration



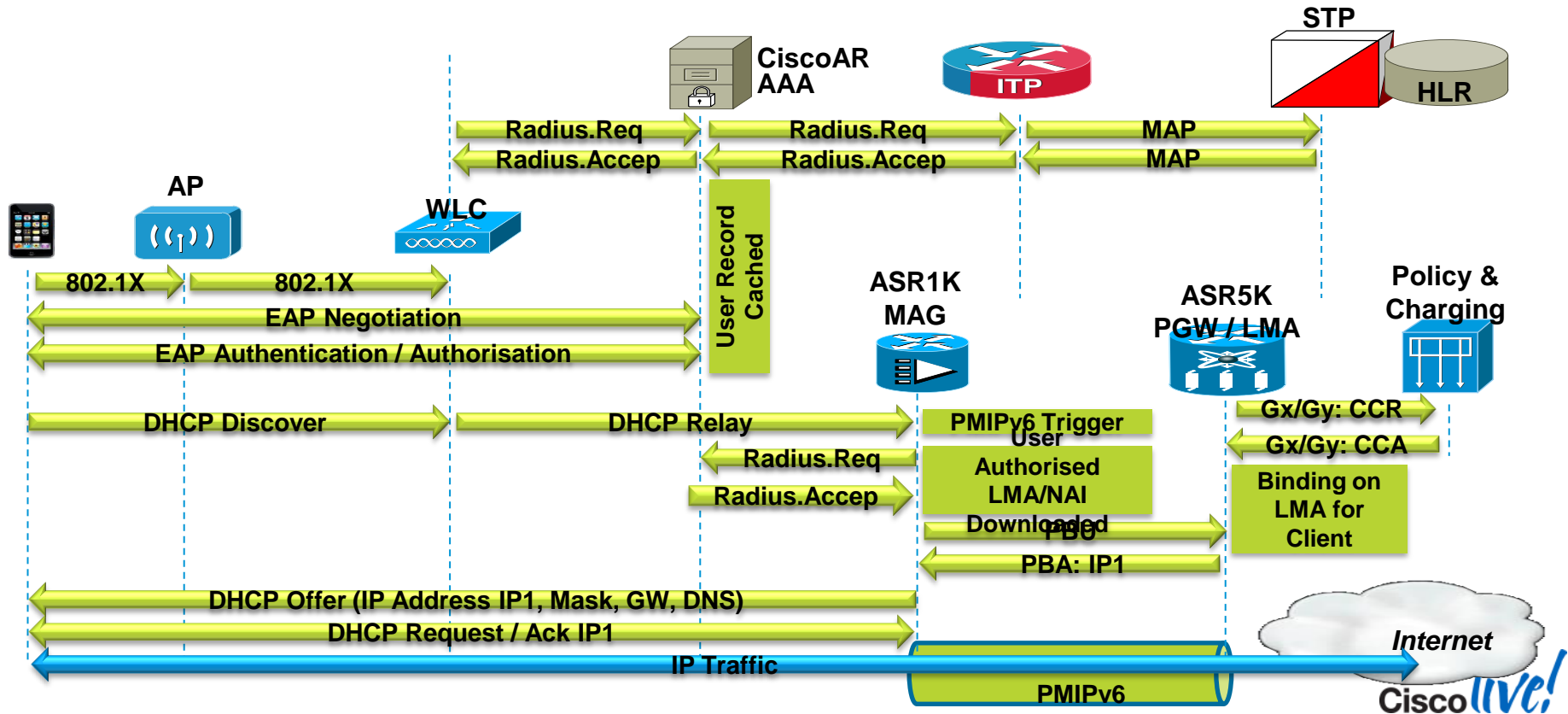
Packet Core: 4G/PMIPv6 Integration into PGW



FSOL : RADIUS/Unclassified MAC , Tunnel Technology PMIPv6

Packet Core: 4G/PMIPv6 Integration into PGW

Call Flow Overview



GTP-based Deployment for Packet Core Integration

Connectivity

- L2-connected network
- DHCP initiated
- Offload: Unclassified MAC & RADIUS Proxy initiator

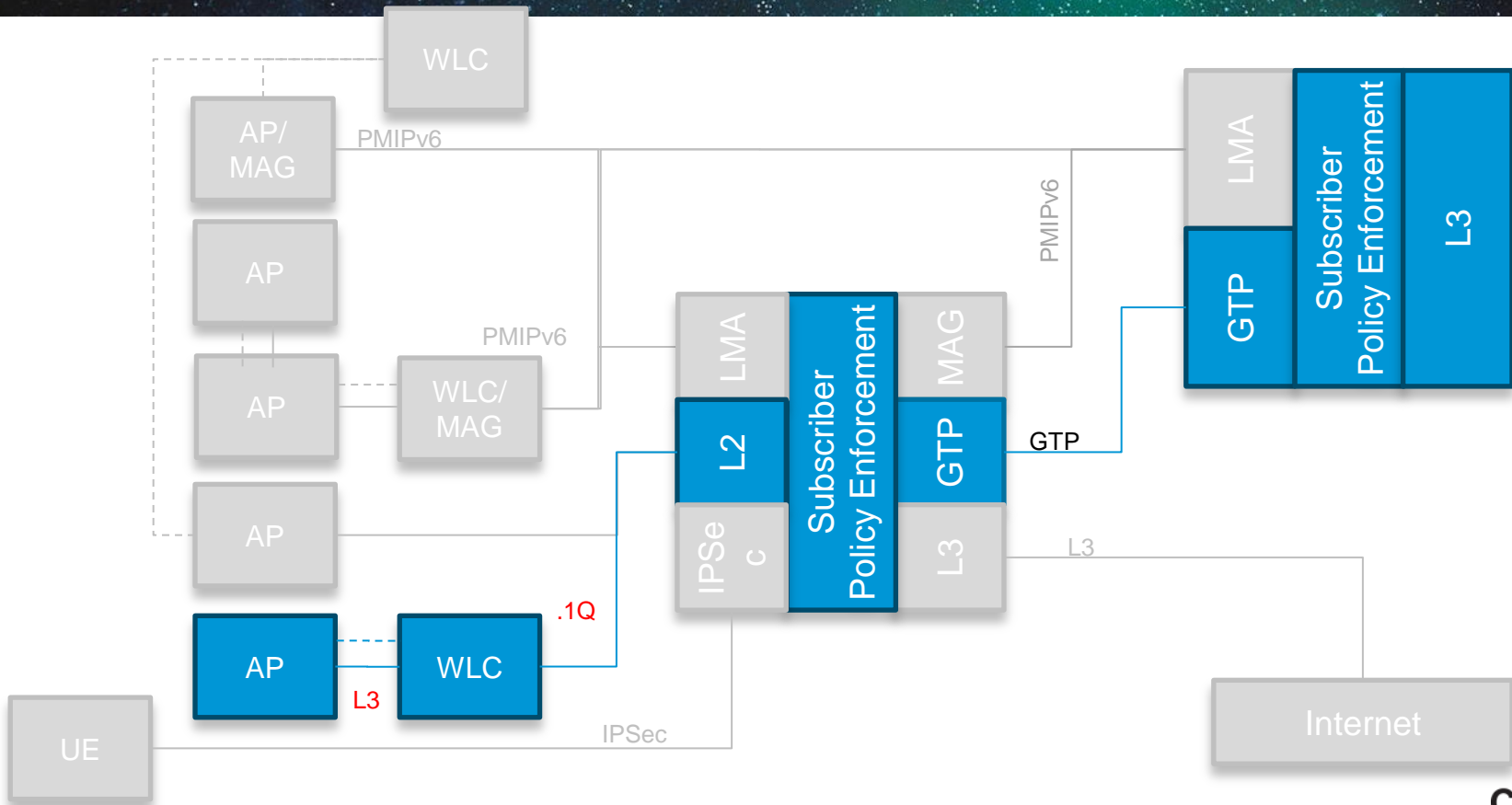
IP Addressing

- Simple IP User Internal DHCP
- Mobile IP User from GGSN

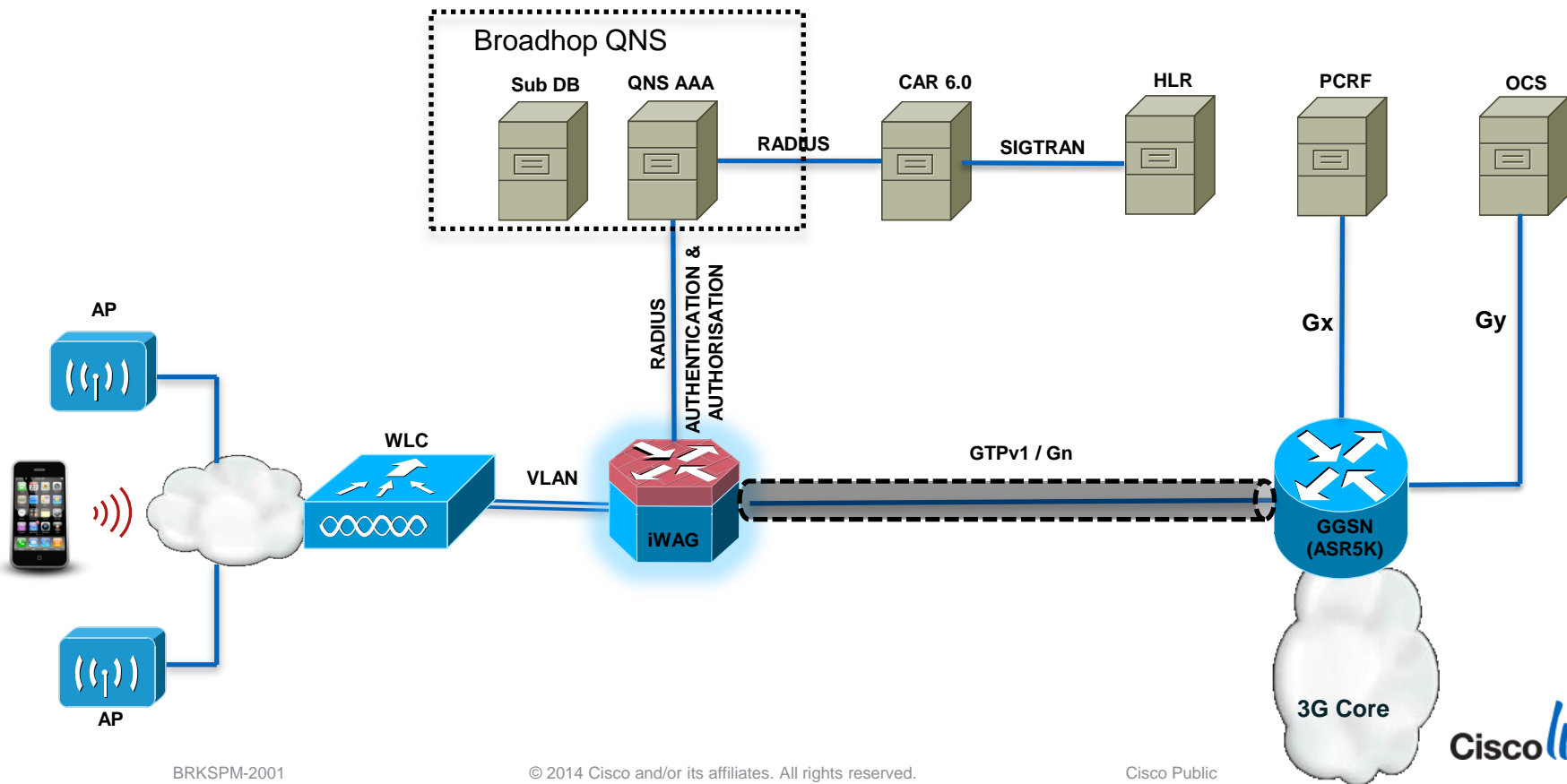
Services

- Open Access Wi-Fi Services (Simple offload)
- Web Authentication, EAP-SIM/AKA
- Dynamic Service Selection

GTP-based Deployment for Packet Core Integration

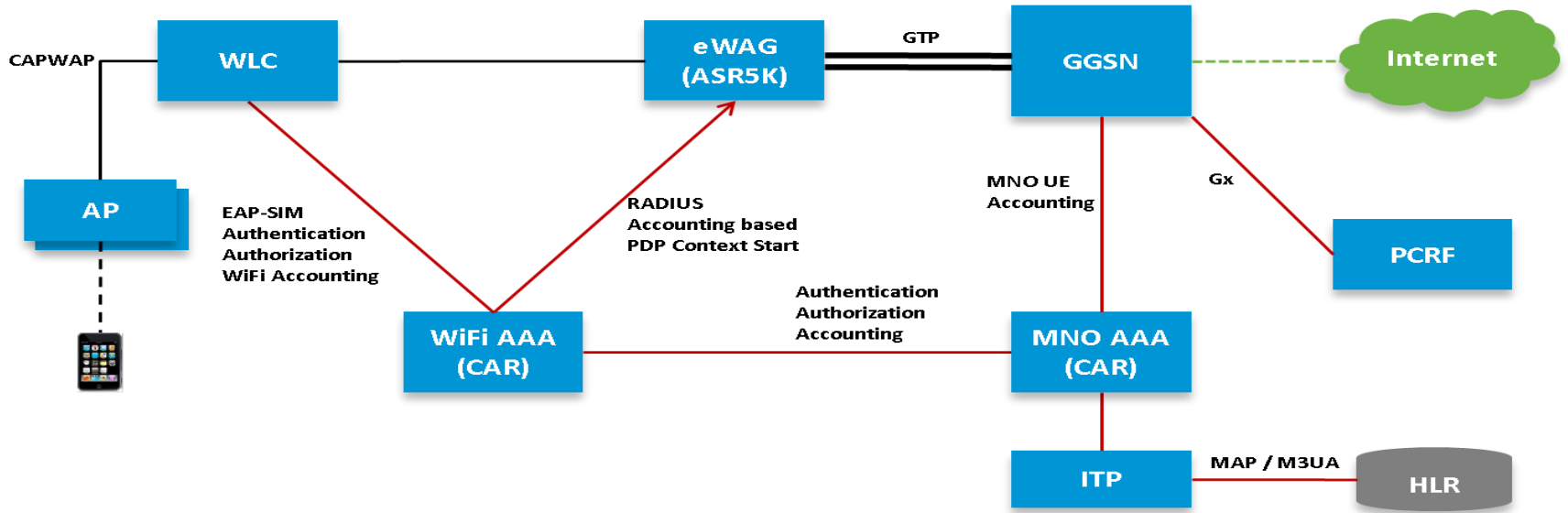


Packet Core: 3G/GTP Integration into GGSN



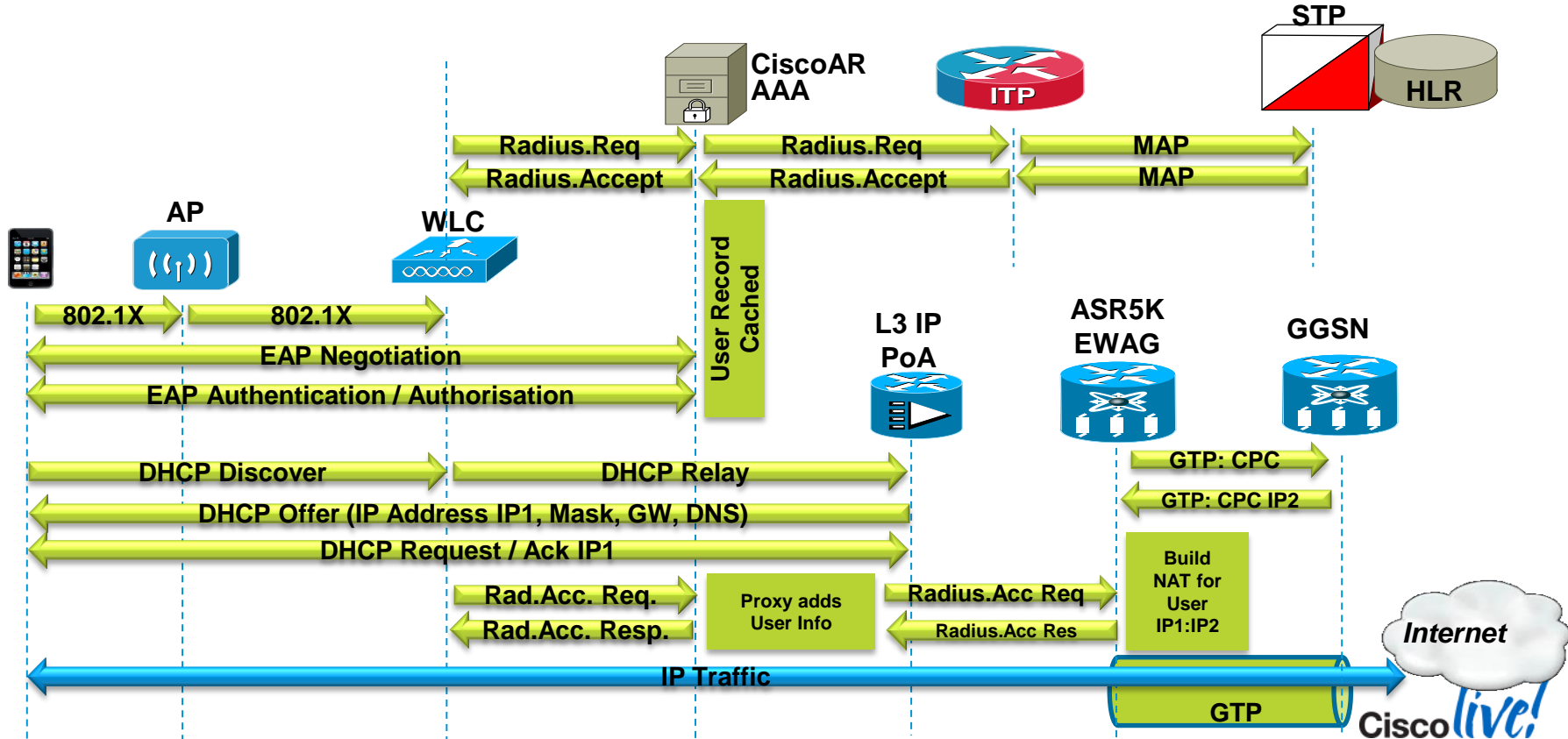
Packet Core: 3G/GTP Integration into GGSN

- Possible Inter-Op Scenarios with third party:
- WiFi AAA
 - MNO AAA
 - GGSN
 - PCRF



Packet Core: 3G/GTP Integration into GGSN

Call Flow Overview





Case Studies and Customer Deployments

Cable/MSO: Cablevision

224,000 Brand Impressions per day
1,000,500 devices detected, 596,000 are iOS

Separate use cases for device categories:
Laptop, Tablet, Phone

Use cases Deployed: Branding, App Promo

- Cablevision Setup
- Serve at beginning of session, every 5 min.
- iOS devices get App promo as first imp
- Average serve rate of 1-3 impressions per day per surfing device.
- Workdays are 30-40% more active than holidays, snow days or weekends.

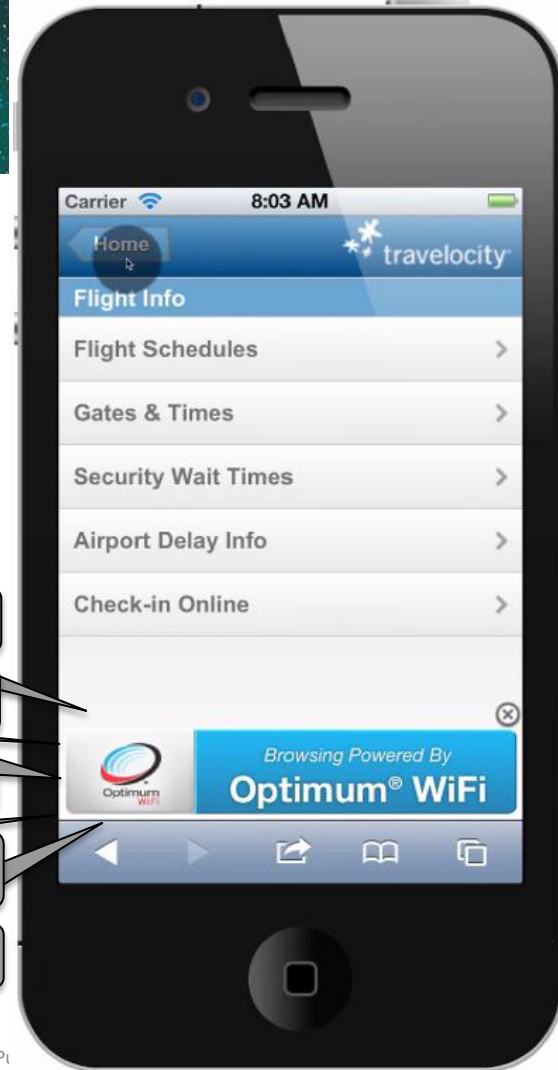
Scales for device

Animation effects

Anchor to any corner

Supports transparency

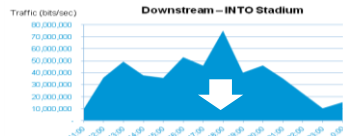
Timed entry and exit



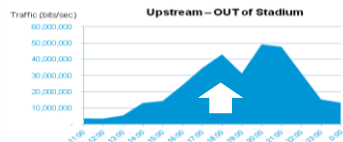
Connected Stadium – Super Bowl XLVI



- Fan facing Wi-Fi access for Super Bowl activities
- Carrier-neutral Wi-Fi access – free to all fans
- Provided by Verizon wireless
- Objective: enhanced *fan experience* and *3G offload*
- High speed data as well as Voice & SMS worked well
- 604 in-stadium Access Points



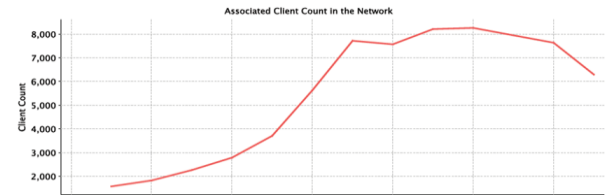
Downstream
Peak: 75 Mbps
Total: 225.3 GB



Total attendance:
68,658

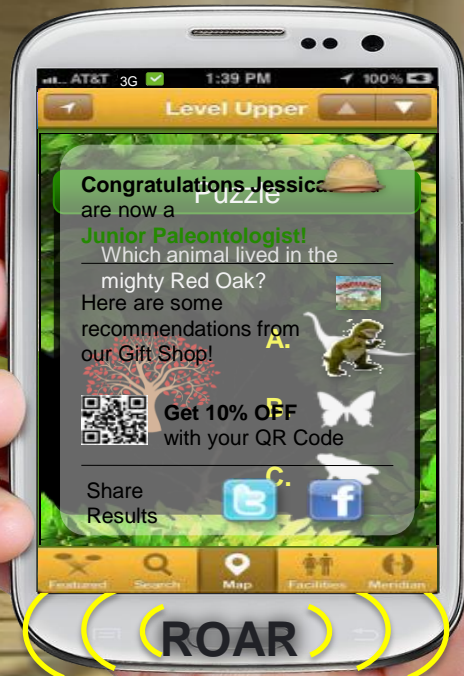
Unique Associations:
12,946 (19%)

Simultaneous access:
8,260 (12%)



Venue: Fernbank Museum with AT&T

Transforming Visitor Experience with Personalised, Managed Wi-Fi



- Personalised Tour Guide
- Location-based context help / Analytics
- Promotions / Attractions

Copenhagen Airport

Aid Travellers through Wi-Fi Services

What's New

- Location Analytics with ThinkSmart

Security Personnel



Check-In Personnel



Customs Personnel



Traffic Flow



Advertising Placement





Summary & Takeaways

Key Take-away: SP Wi-Fi is all About Optimising/ Monetising for Providers

- Mobile wireless data is exploding
- SPs are looking at Wi-Fi as a way to optimise their network, reduce customer churn and increase revenue opportunities
- SP Wi-Fi access is a business reality today for ALL providers
- Rich service management needed for subscriber differentiation and monetisation
- There is no single solution for all access types, but all types of access should be supported at the service layer
- An end to end architecture must provide services for different deployment models
- The results of a good deployment will deliver outstanding user experience

Cisco e2e Product Portfolio for SP Wi-Fi

WAG, GGSN, PGW, ePDG, TTG:
Cisco ASR5K



Indoor Access Points:
Cisco Aironet 3600 Series



Outdoor Access Points:
Cisco Aironet 1550 Series



WAG & ISG:
Cisco ASR1K/9K



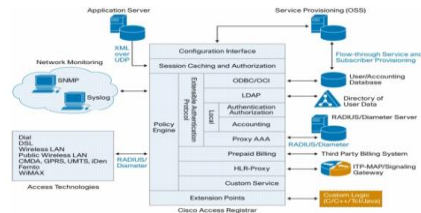
Wireless LAN Controllers:
Cisco 5500/8510 WLC



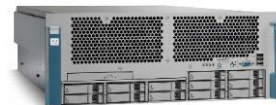
WLAN Management:
Cisco Prime (NCS)



AAA:
Cisco Access Registrar (CAR)



Server:
Cisco UCS



Cisco *live!*



Q & A

Complete Your Online Session Evaluation

Give us your feedback and receive a Cisco Live 2014 Polo Shirt!

Complete your Overall Event Survey and 5 Session Evaluations.

- Directly from your mobile device on the Cisco Live Mobile App
- By visiting the Cisco Live Mobile Site www.ciscoliveaustralia.com/mobile
- Visit any Cisco Live Internet Station located throughout the venue

Polo Shirts can be collected in the World of Solutions on Friday 21 March 12:00pm - 2:00pm



Learn online with Cisco Live!

Visit us online after the conference for full access to session videos and presentations.

www.CiscoLiveAPAC.com



CISCO TM